

Water Reinvented.

Sintex

SAAF . SAFE . SAHI

50

YEARS OF
SAFEGUARDING
INDIAN FAMILIES



PIPES &
FITTINGS



Water is life

Can you imagine a world without **water**? How would we cook, wash, bathe, or perform other everyday tasks? Would we have to ration water, control our thirst? People would fall sick, and illnesses and diseases would be widespread, making curing them difficult.

Scarily enough, that day may not be far away. India has a population in billions but **only 4 percent of global freshwater resources to fulfill their needs**. Cities like Chennai faced a water crisis in 2019, when their reservoirs dried to near-empty levels. Depleting groundwater levels and poor water management put Bangalore and Hyderabad at water scarcity risk. Jaipur is projected to have the second-highest water deficit in the world by 2050.

And still, thousands of litres are wasted through careless consumption, such as not repairing leaky taps or leaving them running during daily hygiene activities.

Every drop of water wasted puts a strain on those who need it the most, like farmers and other food growers. Can you imagine a world without food?

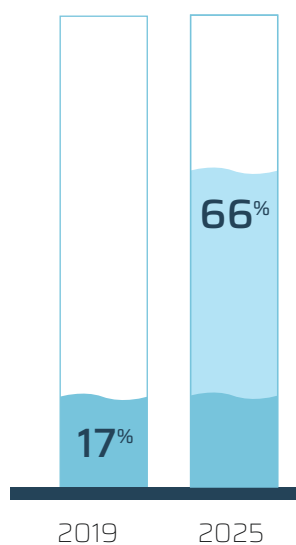
And unlike the rest of the world that preserves water by recycling sewage water, only 28% of India's 72,000 million litres produced per day is treated. The rest pollutes rivers, lakes, and groundwater, which are already being contaminated by drainage systems overburdened by expanding cities, industrialization, and encroachment on lakes and ponds.

Water scarcity is more than a crisis. It is a growing threat to daily survival. Solving the water challenge has gone beyond simply saving water. It requires rethinking how we transport, store, and use every drop.

At Sintex, we address this challenge with bold, innovative action that makes a real difference.



The State of Water Access & Water Safety in India

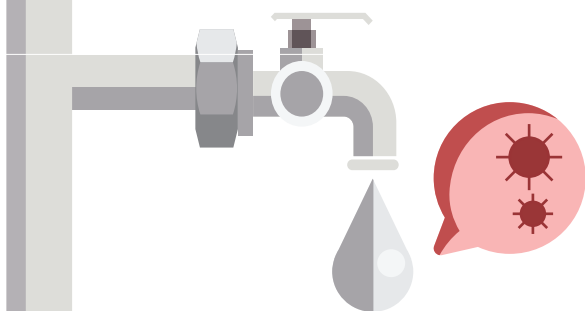


Piped water access in rural India has surged from 17% in 2019 to 66%*, marking a major improvement.

1.5 Million



Yet, waterborne diseases still claim the lives of approx 1.5 million children under five annually.



Our Commitment

As pioneers in water management, we strive to redefine industry standards, through continuous innovation and improvement, ensuring water that is

Saaf
Safe
Sahi



How we do it

Sintex NXT Advantage comprises of breakthrough innovations that redefine water management across our entire range of pipes and tanks. Designed to meet evolving consumer needs, it integrates technology to ensure superior durability, safety, and hygiene.



OUR LEGACY

Welspun[®]

Pioneering Growth, Inspiring Change

Welspun has established a strong presence across a diverse range of industries, excelling in sectors such as home textiles, advanced textiles, and flooring solutions. The company has also made significant strides in retail, infrastructure, and warehousing, while maintaining leadership in manufacturing line pipes, DI pipes, stainless steel & alloys, pig iron, and TMT rebars.

Making water positive by powering innovation

Our vision

Making Indian buildings and public infrastructure Water Positive & Energy Efficient through polymer innovation and customer empowerment.

We believe that the purity of water begins with the purity of water storage and transportation. Which is why, our every innovation points to that direction.

Our polymer technology innovation gives you advanced, value-driven solutions that are stronger, smarter, perform better, and last longer.

Our tanks, irrespective of variant or size, are engineered from 100% virgin plastic, i.e., fresh, new plastic that is produced directly from raw materials. This not only gives you water that is clean and safe to consume but also makes the tanks resistant to stress, temperature, environmental and chemical factors.

Our path-breaking Active Silver Technology gives your water 4X protection, shielding it from viruses, bacteria, fungus, and algae. We are more than just a tanks and pipes company. We are a company that takes your health seriously.

From training to transformation

At the heart of everything we do is a belief in community, growth through excellence and shared success.

We bring plumbers together through Counter Meets with 10-12 participants and Large Plumber Meets hosting 60-70 professionals, to build knowledge and a strong sense of community and collaboration.

Every pipe launch is followed by hands-on Plumber Workshops to train them on new systems, products, and applications, to make them industry ready.

Our Plumber Pride Loyalty Program is evolving to offer exclusive access to the upcoming Plumbing Academy, a dedicated learning space to enhance product understanding and practical skills.

To support ongoing growth, the soon-to-be-launched WhatsApp and online learning modules will strengthen plumbers' knowledge and skills with instant access to product information, updates, and self-paced learning.

Beyond product innovation and technical advancements, we focus on creating simple, impactful solutions that empower and inspire our customers to safeguard the future of water. Through a mix of social media engagement, in-person community meets, compelling print advertorials, and initiatives like the recently launched Sintex Water Donation Drive, we actively promote the importance of leak-free, contamination-free, and hygienic water, to promote a healthier, more sustainable living. At Sintex, we do not just solve water challenges, we shape the future of clean water.

Innovation with a Vision

Sintex-BAPL is a subsidiary of Welspun Corp Limited, part of the Welspun Group.

Welspun is more than just one of India's fastest-growing global conglomerates. It is committed to innovation with purpose, actioning groundbreaking ideas that redefine industries and enrich lives. From the softness of home textiles to the strength of infrastructure, Welspun's diverse portfolio spans every inch of life, with flooring solutions, retail, warehousing, and advanced textiles; and critical industrial materials like line pipes, DI pipes, stainless steel, alloys, pig iron, and TMT rebars. Spearheading change for a better tomorrow. Creating lifelong value for the future world.

Now, as part of Welspun, and as one of the leading names in water management, Sintex delivers solutions from source to storage to supply. A pioneer and category creator in water tanks, Sintex continues its legacy of innovation with CPVC pipes and pipe fittings that are designed to take water to another level. These next generation water systems not just offer higher tensile strength but also ground-breaking health-positive features.

A dedicated workforce of over

30,000

employees

across international locations

Serving more than

100,000

shareholders

Operating in over

50

countries

20+

state-of-the-art manufacturing facilities

in India, the USA, KSA, and beyond

Achieving a turnover of

5 Billion

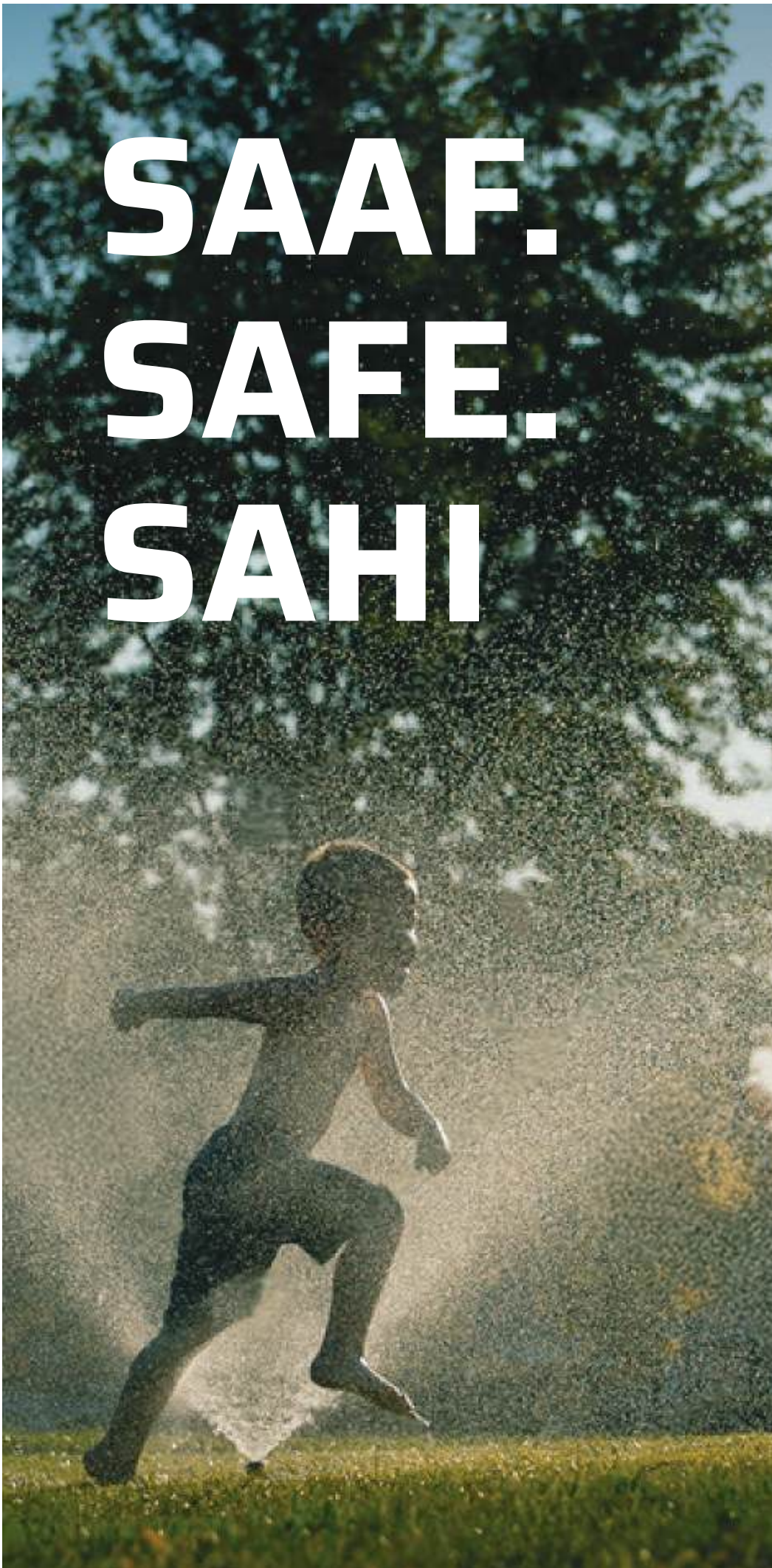
USD

2nd

largest

producer of large diameter pipes globally

**SAAF.
SAFE.
SAHI**





Keeping water SAAF, SAFE and SAHI for 50 years

50 years ago, Sintex transformed water from a rarity to a household commodity with storage tanks that took water to new heights. These black, circular structures dominated every residential, commercial, and industrial terrace, staunchly establishing their position as the trusted guardians of clean water. Going a step further, Sintex helped housing complexes and institutions reclaim their terrace space with large community tanks and underground tanks. Sintex reinvented water management with advanced septic tanks that reduced BOD by 70%, and packaged sewage treatment plants that converted grey water into safe, reusable water.

With the largest range of storage tanks powered by proven technology, Sintex has set the benchmark for water that is safe, clean, and accessible for every need. The confidence of our customers who trust us to keep India's water SAAF, SAFE and SAHI, keeps us pushing boundaries.

Our Promise

Saaf, Safe, Sahi.

Integrated into the Welspun Group, a

5 billion

USD global conglomerate

Leading water storage brand in India for over

50 years

Industry Leaders


Recognised as category creators and pioneers with exceptional quality and motivation.

Offering tanks from

200 litres to

16 lakh litres

Sintex is synonymous with water and more

A young child with light brown hair is playing in a water fountain. Water is splashing over their head and face, creating a dynamic and joyful scene. The background is dark, making the water droplets stand out. The child is looking down, and their hands are near their face, possibly playing with the water. The overall mood is fresh and clean.

**At Sintex, we don't just build products,
we set benchmarks.**

Be it tanks or pipes, Sintex safeguards the reputation of engineers who can confidently design systems that ensure safety, efficiency, and reliability. It forms the backbone of industries where seamless water management is not just a necessity, but the pillar of progress and productivity. It reflects the trust of countless families who turn on the tap knowing that every drop of water that flows out is clean and safe to consume.

Sintex Advantage NXT

Innovation that redefines water management

70% of India's water sources are contaminated, creating a rise in waterborne diseases and other ailments. This is the same water that runs through your outdated pipes, which you drink, cook, and wash with.

Advantage NXT is Sintex's proprietary innovation, a new generation of technologically superior water systems, designed to protect water from contamination caused by climate change, water scarcity and poor sanitation. Advantage NXT is innovation in action to enhance durability, efficiency, and safety. Advantage NXT protects your family's health as much as you.



TRUST OF SINTEX, NOW IN PIPES

HOT & COLD
WATER SYETEM



POTABLE
WATER SUPPLIES



SOIL , WASTE WATER &
RAIN WATER SYSTEM



DRAINAGE SYSTEM



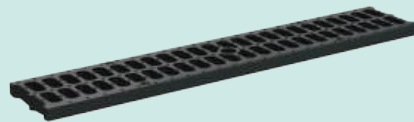
AGRICULTURAL
WATER PIPE



RECYCLE WATER
SUPPLIES



SURFACE DRAINAGE
WATER SYSTEM



PIPES



Sintex Pipes

Hot & Cold
Water System

Potable
Water System

Drainage
Water System

Sewerage
Waste & Rain
Water System

Agricultural
Water System

Recycle Water
Supplies

Surface Drainage
Water System

Sintex

HotXTM | Hot & Cold
water system

CPVC PLUS

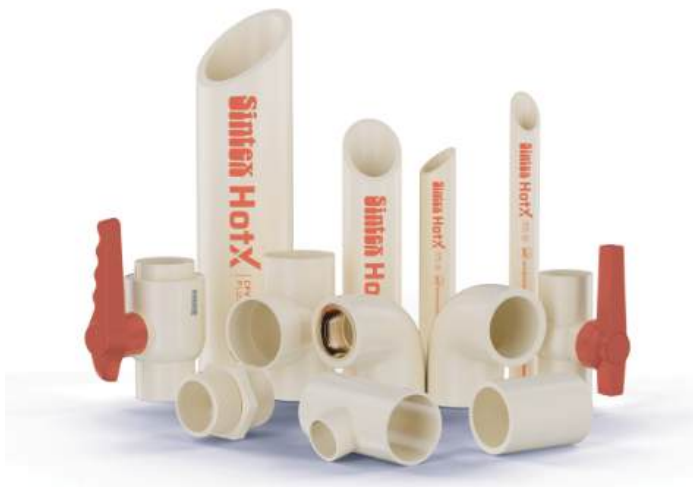
With Antimicrobial Technology

Your water pipes deliver performance. But do they care for your health?

Any good quality pipe can transport water. Sintex goes beyond flow and pressure, bringing you HOTX CPVC PLUS, India's 1st CPVC pipe with Antimicrobial properties. Sintex believes that unwanted bacteria, rodents and corrosive elements should be put in their place - outside your pipes. The Antimicrobial technology does just that! By preventing growth of harmful bacteria, fungi, virus and algae inside the pipes, it reduces the risk of blockages, contamination and unpleasant odours. This keeps your pipes leak-free, contamination-resistant, and your water safe for everyday use.



**ANTI
MICROBIAL***



Why Are We **NXT** Gen Choice?



ANTIMICROBIAL* PROPERTIES

Sintex HotX CPVC Plus introduces next-generation pipes equipped with built-in antimicrobial properties. This ground-breaking feature actively prevents the growth of harmful bacteria, virus, algae and fungi.



HIGHEST QUALITY OF BRASS FITTINGS

Brass fittings with 130 Nm torque resistance and enhanced thread design provide superior grip, ensuring increased system reliability, better high-pressure performance, easier installation, and a longer-lasting, secure plumbing system with reduced maintenance and leakage risks.



EASY INSTALLATION

CPVC uses a simple solvent cement jointing process, requiring minimal tools, which lowers installation costs compared to copper or GI pipes.



CHLORINE RESISTANCE

Sintex HotX CPVC Plus piping is unaffected by chlorine in potable water, preventing degradation or leaks.



LONG LASTING

Resistant to corrosion, physical damage, and extreme weather, ensuring long-lasting performance.



LOW THERMAL EXPANSION

Sintex HotX CPVC Plus has a low thermal expansion coefficient, reducing pipe "snaking" & convenient during hot water use.



THERMAL INSULATION

Maintains water temperature and ensures efficient performance, especially in hot climates.



UV PROTECTION

UV-stabilized for outdoor use, preventing degradation from sunlight.

Sintex HotX™

CPVC PLUS

With Antimicrobial Technology

Explore Our NXT Gen Pipes & Fittings

Where Can You Use Sintex HotX CPVC Plus Pipes?



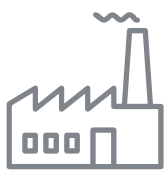
Residential Plumbing Systems

Hot & Cold water supply lines in homes and apartments.



Commercial Plumbing Systems

Hot and cold water systems in commercial establishments like hotels, hospitals, schools, and offices.



Industrial Applications

Water distribution systems in industrial plants, including those for heating systems, cooling systems, and chemical transfer.

Sintex HotX CPVC Plus Pipes & Fittings SKUs

Type	Sub - Type	Product Type	Pipe Color	Stripe Color	Size	Length
CTS (Copper Tube Size)	SDR11	Pipes	Off-White (Ivory)	Red	3/4" - 2"	3 M
		Fittings	Off-White (Ivory)		3/4" - 2"	
	SDR13.5	Pipes	Off-White (Ivory)	Brown	3/4" - 1 1/2"	3 M

Certified by

IS:17546



IS:15778



Middle of the Wall SKUs

- CPVC Concealed Valve Round & Triangle Neck QT - 1/2" - 1"
- Wall Mixer Adaptor 1"X1/2" & 3/4"X1/2"

Solvent Cement SKUs

Product Type	Packaging Type	SKUs
CPVC	Co-Ex Bottle	50 ML, 100 ML, 250 ML
	Tube	20 ML, 50 ML
	Tin	500 ML, 1 L



Sintex

CoolX™

Potable water system

UPVC PLUS

With Antimicrobial Technology

Are your pipes fighting germs? Or spreading them?

Sintex CoolX UPVC Pipes & Fittings are built for more than just performance - they're designed to protect. The Antimicrobial technology prevents virus, bacteria, fungi, and algae from growing inside the pipe, reducing the risk of blockages and contamination. This keeps your water cleaner and your plumbing safer.



**ANTI
MICROBIAL***



Why Are We **NXT** Gen Choice?



ANTIMICROBIAL* PROPERTIES

Sintex CoolX UPVC Plus introduces next-generation pipes equipped with built-in antimicrobial properties. This ground-breaking feature actively prevents the growth of harmful bacteria, virus, algae and fungi.



HIGHEST QUALITY OF BRASS FITTINGS

Brass fittings with 130 Nm torque resistance and enhanced thread design provide superior grip, ensuring increased system reliability, better high-pressure performance, easier installation, and a longer-lasting, secure plumbing system with reduced maintenance and leakage risks.



EASY INSTALLATION

UPVC uses a simple solvent cement jointing process, requiring minimal tools, which lowers installation costs.



LONG LASTING

The pipe resists corrosion from low pH water, coastal salt air, and corrosive soils, maintaining full water-carrying capacity.



LEAD FREE

Safe for drinking water and compliant with modern health and safety regulations.



FIRE SAFETY

With a Limiting Oxygen Index (LOI) of 45, Sintex UPVC does not support combustion, produce flaming drips, or contribute to fire spread.



CHEMICAL RESISTANCE

Resistant to variety of chemicals, acids, and alkalis.



UV PROTECTION

UV-stabilized for outdoor use, preventing degradation from sunlight.

Sintex CoolX™

Potable water system

UPVC PLUS

With Antimicrobial Technology

Explore Our NXT Gen Pipes & Fittings

Where Can You Use Sintex CoolX UPVC Plus Pipes?



**Industrial Process
Pipelines**



**Saltwater
Lines**



**Swimming
Pools**



**Transportation
of Corrosive Fluids**



**Manufacturing &
Tanning Plants**



**Coal Washing & Ash
Handling Systems**



**Hand
Pumps**



**Down Take
Lines**



**Sugar, Paper, and
Distillery Industries**

Sintex CoolX UPVC Plus Products Range SKUs

Type	Sub - Type	Product Type	Pipe Color	Stripe Color	Size	Length
CTS (Copper Tube Size)	SCH 80	Pipes	White	Blue	½" - 2"	3 M, 6 M
		Pipes	White	Red	1" - 2"	3 M, 6 M
	SCH 80	fittings	White			

Middle of the Wall SKUs

- CPVC Concealed Valve Round & Triangle Neck QT - ½" - 1"
- Wall Mixer Adaptor 1"X½" & ¾"X½"

Solvent Cement SKUs

Product Type	Packaging Type	SKUs
UPVC	Co-Ex Bottle	100 ML, 250 ML
	Tube	20 ML, 50 ML
	Tin	500 ML, 1 L

Certified by



Sintex

SWRXTM

Sewerage Waste Rain water system

UPVC PLUS

With Anti-Rodent Properties

You protect your house from rats and other rodents. Who protects your drainage?

In drainage and sewerage, the real test of quality lies in what happens out of sight, inside the pipes, which face damage from rats and squirrels who chew them. This not only leads to leaks and blockages but can also spread waterborne disease. Sintex SWRX UPVC pipes and fittings are made from a single layer of high-quality PVC material, which makes them rodent damage-proof and highly efficient for drainage and wastewater management.



**ANTI
RODENT***



Why Are We **NXT** Gen Choice?



ANTI RODENT*

Sintex SWR pipes are resistant to rodent damage, preventing chews and ensuring long-term integrity. This feature reduces maintenance costs and disruptions, making them a durable choice for drainage systems.



CORROSION RESISTANCE

Sintex SWR pipes offer excellent corrosion resistance. These maintenance-free pipes and fittings do not rust, corrode, or promote deposit build-up inside the system.



EASY INSTALLATION

Sintex SWR systems are lightweight, reducing transportation, handling, and installation costs.



TOUGH AND RELIABLE

With a special formulation for high strength and a smooth finish, Sintex SWR pipes provide a long operational life.



SMOOTH INTERIOR

The smooth interior of Sintex SWR pipes and fittings prevents deposit build-up, ensuring low friction loss and high flow rates throughout the life of the system.



COST EFFECTIVE

Sintex SWR systems offer many advantages, resulting in lower capital, installation, and maintenance costs compared to other piping systems.

Sintex

SWRX

Sewerage Waste Rain water system

UPVC PLUS

With Anti-Rodent Properties

Explore Our **NXT Gen** Pipes & Fittings

Where Can You Use Sintex SWRX Pipes?



Soil discharge piping



Rainwater transportation



Wastewater discharge



Domestic and commercial drainage



Venting of gases, odors, and bad smells



Replacement for cast iron piping



**Non-pressure industrial drainage
(chemical compatibility-based)**



**Laboratory drainage
(chemical compatibility-based)**

Sintex SWRX Products Range

Sintex has different range of pipes used in modern sanitary drainage systems, including:

SWR Pipes

Designed for efficient waste and rainwater drainage in residential, commercial, and industrial buildings.

SWRX

Single-layer pipes made of high-quality PVC, offering smooth flow, corrosion resistance, and ease of installation for non-pressure drainage systems along with Anti-Rodent benefits.

SWRX PRO

Three-layered pipes offering Anti-Rodent benefits, superior strength, durability, and corrosion resistance, ideal for various drainage systems.

SWRX ECO

Perforated pipes for controlled surface drainage, allowing efficient water discharge in non-pressure systems.

Each pipe type meets specific drainage needs while adhering to industry standards for safety, performance, and sustainability.

Types of SWR Pipes

SWR pipes are available in two main types:

Type A: Designed specifically for rainwater and ventilation applications

Type B: Intended for handling soil and waste discharge

These pipes and fittings are offered in two connection systems:

Ringfit: Uses a rubber ring for a secure, leak-proof connection

Solfit System: Features a self-locking design for easy and reliable installation

Product Range

Pipes: Available in various diameters (75mm, 90mm, 110mm, 160mm) with single or double socketed ends; Available in both Solfit and PushFit; Available in various lengths (3m, 6m)

Fittings: Bends, tees, couplers, reducers, traps, and other various fittings for sewerage

Flexible PVC Waste Pipe or Corrugated Waste Pipe (SWR) 35 mm

Pan Connector (SWR): 110 X 125 mm in straight configuration

Certified by

IS:14735

IS:13592



Sintex

AgriX™

WATER SUPPLIES SYSTEM

UPVC PLUS


With Lead-Free Properties

Your produce is your pride. Do your pipes care as much?

The quality of your produce depends on the quality of your water. And the quality of your water depends on the quality of your pipe. PVC pipes, commonly known as AGRIPipes, are the backbone of rural water infrastructure as they play a double role - efficiently transporting water from borewells, canals, and irrigation systems, with effective drainage applications. Sintex AGRIPipes UPVC pipes are lead-free and made from a tough blend of plastic and vinyl, to keep your farm productive and water smart.



**LEAD
FREE**



Why Are We **NXT** Gen Choice?



LEAD FREE UPVC

uPVC pipes are safe for drinking water.



LONG LASTING

uPVC pipes are highly resistant to physical damage, including cracking and breakage. This makes them ideal for use in areas with extreme weather conditions or rough handling.



LOW MAINTENANCE

Due to their resistance to wear, rust, and rot, uPVC pipes require very little maintenance compared to traditional piping materials like iron or steel.



NON TOXIC

uPVC pipes are non-toxic, making them safe for use in drinking water systems and other applications involving human contact.



CHEMICAL RESISTANCE

uPVC is highly resistant to a wide range of chemicals, including acids, alkalis, and salts. This makes it suitable for transporting a variety of fluids, including potable water and wastewater.



EARTHQUAKE RESILIENCE

Capable of withstanding extreme movement and bending, making it suitable for earthquake-prone areas. Withstands vigorous shaking of the earth without damage.



LIGHT WEIGHT

Compared to other materials like metal, uPVC is much lighter, which simplifies transportation, handling, and installation of the pipes.



INTERNAL SMOOTH SURFACE

The pipe's smooth surface helps prevent bacterial contamination (e.g., E. coli). Used by many water companies to maintain water quality and prevent contamination.

Sintex

AgriX™

WATER SUPPLIES SYSTEM

UPVC PLUS

With Lead-Free Properties

Explore Our
NXT Gen
Pipes & Fittings

Sintex AgriX Products Range

Pipes: Available in various diameters
(40mm, 50mm, 63mm, 75mm, 90mm, 110 mm)
with 4 kgf/cm² and 6 kgf/cm² pressure rating;
Available in 6m length

Fittings: Bends, tees, couplers, reducers,
Male/ Female Adaptors and other
various fittings for sewerage
applications.

Certified by

IS:4985



IS:7834



NSF/ANSI/CAN 372



Sintex

GroundX™

UNDERGROUND DRAINAGE SYSTEM

FOAMCORE

With Anti-Rodent Properties

It looks clean on the surface. But do you know what lies beneath?

Sintex GroundX pipes are built to resist rodent damage, prevent water logging, and keep your systems clean and efficient. Made with advanced foam core technology, they are tough, reliable, and eco-friendly, giving you a smarter, stronger foundation for sustainable drainage from the ground up.



**ANTI
RODENT***



Why Are We **NXT** Gen Choice?



ANTI RODENT*

Sintex GroundX pipes are resistant to rodent damage, preventing chews and ensuring long-term integrity. This feature reduces maintenance costs and disruptions, making them a durable choice for drainage systems.



COST-EFFECTIVE AND LONG-LASTING

Foamcore pipes provide an affordable and durable option for drainage, reducing maintenance and replacement costs over time.



EXCELLENT CHEMICAL RESISTANCE

These pipes offer superior resistance to a wide range of chemicals, ensuring reliability in various environments.



CORROSION-PROOF AND DURABLE

Sintex Foamcore pipes are resistant to corrosion and can withstand extreme temperature fluctuations, ensuring long-term performance.



LIGHTWEIGHT AND EASY TO HANDLE

Sintex Foamcore pipes are lightweight, making them easy to transport and install with minimal effort.

Sintex GroundX

UNDERGROUND DRAINAGE SYSTEM

FOAMCORE

With Anti-Rodent Properties

Explore Our NXT Gen Pipes & Fittings

Where Can You Use Sintex GroundX Foam Core Pipes?



Residences



Hospitals



Commercial Complexes



Academic Institutes



Resorts

Products Range

Sintex GroundX

Pipes:

Size (mm)	Stiffness Class	Fit	Length
110	SN 2 SN 4 SN 8	Sol Fit Push Fit	3 M
160			6 M
200			

Fittings:

Bends, tees, couplers, reducers and other various fittings for drainage plumbing solutions; Available in 110, 160 & 200 mm.

Sintex

ReclaimX™

RECYCLE WATER SUPPLIES

UPVC

Fit for Reuse

Why let wastewater go to waste When it can be put to better use?

As part of our mission to conserve water, Sintex has launched ReclaimX uPVC plumbing pipes to transport non-drinkable water that comes from sinks, showers, and washin machines. This water is then recycled for use in gardening, flushing toilets, and cleaning. These pipes come in a distinct purple colour, which is the global sign for reused or recycled water. This makes it easy to tell them apart from regular water pipes. By using these pipes, Sintex aims to save every drop of water and support a healthier environment.



**FIT FOR
REUSE***



Why Are We **NXT** Gen Choice?



FIT FOR REUSE

By using reclaimed water for non-potable purposes, you actively reduce the demand on fresh water resources, contributing to environmental sustainability.



SUSTAINABLE WATER MANAGEMENT

Reclaim wastewater from various sources like household drains to conserve valuable water resources.



DISTINCTIVE PURPLE COLOR

Easily identifiable for recycled water, promoting awareness and preventing cross-contamination with potable water systems.



CORROSION RESISTANT

Resistant to harsh chemicals and high water pressure, making them ideal for reclaimed water systems in residential, commercial, and industrial applications.



DURABLE & LEAK-PROOF

Built to withstand pressurized systems, ensuring long-lasting, reliable performance without leaks or degradation.



EASY INSTALLATION

Lightweight and easy to handle, reducing installation time and labor costs.

Sintex

ReclaimX

RECYCLE WATER SUPPLIES

UPVC

Fit for Reuse

Explore Our **NXT Gen** Pipes & Fittings

Where Can You Use **Sintex ReclaimX Pipes?**



Irrigation and landscaping



Industrial use



**Watering and dust control
for under-construction buildings**



**Residential and commercial
building flush lines**



**Public utilities for
non-potable applications**



**Green Building
Application**

Sintex ReclaimX Products Range

Pipes: SCH 40 & SCH 80 : ½" - 2".

Fittings: Sintex CoolX UPVC Fittings are used along with ReclaimX Pipes and are available from ½" to 2".

Sintex

DrainX™

SURFACE DRAINAGE SYSTEM

High Flow

Why should your money go down the drain with the water?

Sintex DrainX are strong, high-quality surface drainage systems. They are designed to quickly and efficiently remove rainwater or surface water from highly populated areas like homes and housing complexes, commercial buildings and parking lots, sports fields, factories and other heavy-use areas. These drains come with different cover options to handle light or heavy loads, depending on the need. They are tough, long-lasting, and meet top-quality European standards. Whether it's for foot traffic, cars, or heavy machinery, Sintex DrainX keeps water moving and structures safe.



**HIGH
FLOW**



Why Are We **NXT** Gen Choice?



**SMOOTH CHANNEL
INNERS ALLOWING
UNHINDERED FLOW**



**IMPROVES SAFETY
BY KEEPING WALKWAYS
AND DRIVEWAYS DRY**



**UV
RESISTANCE**



**LOWER MANNING
COEFFICIENT**



**STRONG
AND DURABLE**



**EASY TO INSTALL
AND MAINTAIN**



**VERSATILE WITH
OUTLETS IN
ALL DIRECTIONS**



**MODULAR AND CAN BE
EXTENDED TO LONG
LENGTHS IF REQUIRED**



**LONG
SERVICE LIFE**

Sintex

DrainX™

SURFACE DRAINAGE SYSTEM

High Flow

Explore Our

NXT Gen

Surface Drainage System

Where Can You Use Sintex DrainX ?



Drainage of Paved Surfaces

- . Roads and highways
- . Parking lots and driveways
- . Sidewalks and walkways
- . Patios, decks, and balconies



Drainage of Industrial and Commercial Areas

- . Warehouses and factories
- . Loading docks and ramps
- . Parking garages
- . Rooftops



Drainage of Landscaped Areas

- . Around buildings
- . Planting beds and gardens
- . Sports fields and playgrounds
- . Around swimming pools & other water features



Other Applications

- . Around fountains and other water features
- . In parks and gardens

Sintex DrainX Products Range

• **All channels come with Grating, junction boxes, End Cap, and End Cap with Outlet**

• **Can LENGTH: 500MM**

• **GRATING LENGTH: 500MM**

• **GRATING TYPES & LOAD BEARING STRENGTH:**

- A (15 kN)
- B (125 kN)
- C (250 kN)
- D (400 kN)
- E (600 kN)

Sintex

HotXTM PRO

HOT & COLD WATER SYSTEM

PEXa-AL-PEXa

MULTI LAYER COMPOSITE & FLEXIBLE

Who said a pipe can't be both tough and flexible?

Sintex HotX PRO pipes are made using three special layers, which makes them strong, flexible, and long-lasting. The inner and outer layers are made of cross-linked polyethylene - PEX - which makes it more durable and heat-resistant. The middle layer is made of aluminum, which blocks oxygen from getting in, thereby stopping rust and damage.



FLEXIBLE

(cm)
7.5
9
11
16
11
11
7.5



Why Are We **NxT** Gen Choice?



FLEXIBILITY & EASE OF INSTALLATION

MLCP pipes are highly flexible, allowing easy bending and routing around corners without the need for additional fittings, making installation faster and more cost-effective.



LONG LASTING

The multiple-layer structure provides increased resistance to mechanical damage, UV degradation, and chemical exposure, ensuring long-lasting performance in both hot and cold water systems.



TEMPERATURE & PRESSURE RESISTANCE

MLCP pipes are designed to withstand both hot and cold water, with temperature resistance up to 95°C (203°F) and high-pressure ratings, which makes them suitable for a variety of domestic and industrial applications.



NON-TOXIC AND SAFE

Like CPVC, MLCP pipes are non-toxic and ensure the purity of the water supply, meeting international standards for potable water use.



OXYGEN BARRIER

The aluminum layer in MLCP pipes prevents oxygen from permeating the pipe, which is especially beneficial in heating systems, as it reduces the risk of corrosion and extends the life of the system.

Sintex

HotXTM PRO

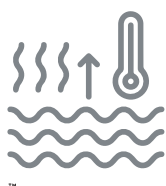
HOT & COLD WATER SYSTEM

PEXa-AL-PEXa

MULTI LAYER COMPOSITE & FLEXIBLE

Explore Our **NXT Gen** Pipes & Fittings

Where Can You Use **Sintex HotX PRO Pipes?**



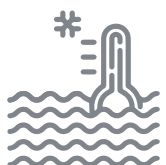
Hot Water Systems

Ideal for domestic and commercial hot water supply, geysers, solar applications as they can handle higher temperatures and pressures with minimal expansion or contraction.



Refrigeration and Chilled Water Systems

The oxygen barrier in MLCP also makes it suitable for refrigeration and chilled water applications.



Cold Water Systems

Suitable for both residential and industrial cold water distribution.



Gas Supplies

It can be used for Gas Supplies as well.



Underfloor Heating Systems

MLCP is often used in underfloor heating systems due to its flexibility and resistance to high temperatures.

Sintex HotX Pro Products Range

Pipes: Size (ID x OD) (mm) - 16X20

Coil Length (M) - 100M

Fittings: Push -Fit, Easy to use and install.



SCAN QR CODE
TO KNOW MORE

SINTEX-BAPL LIMITED

Toll Free No.: 1800-121-2764

www.sintexonline.com

Email: sintex_support@welspun.com

